

# FIRST FLOOR

1,986 sq. ft.

8'-0"

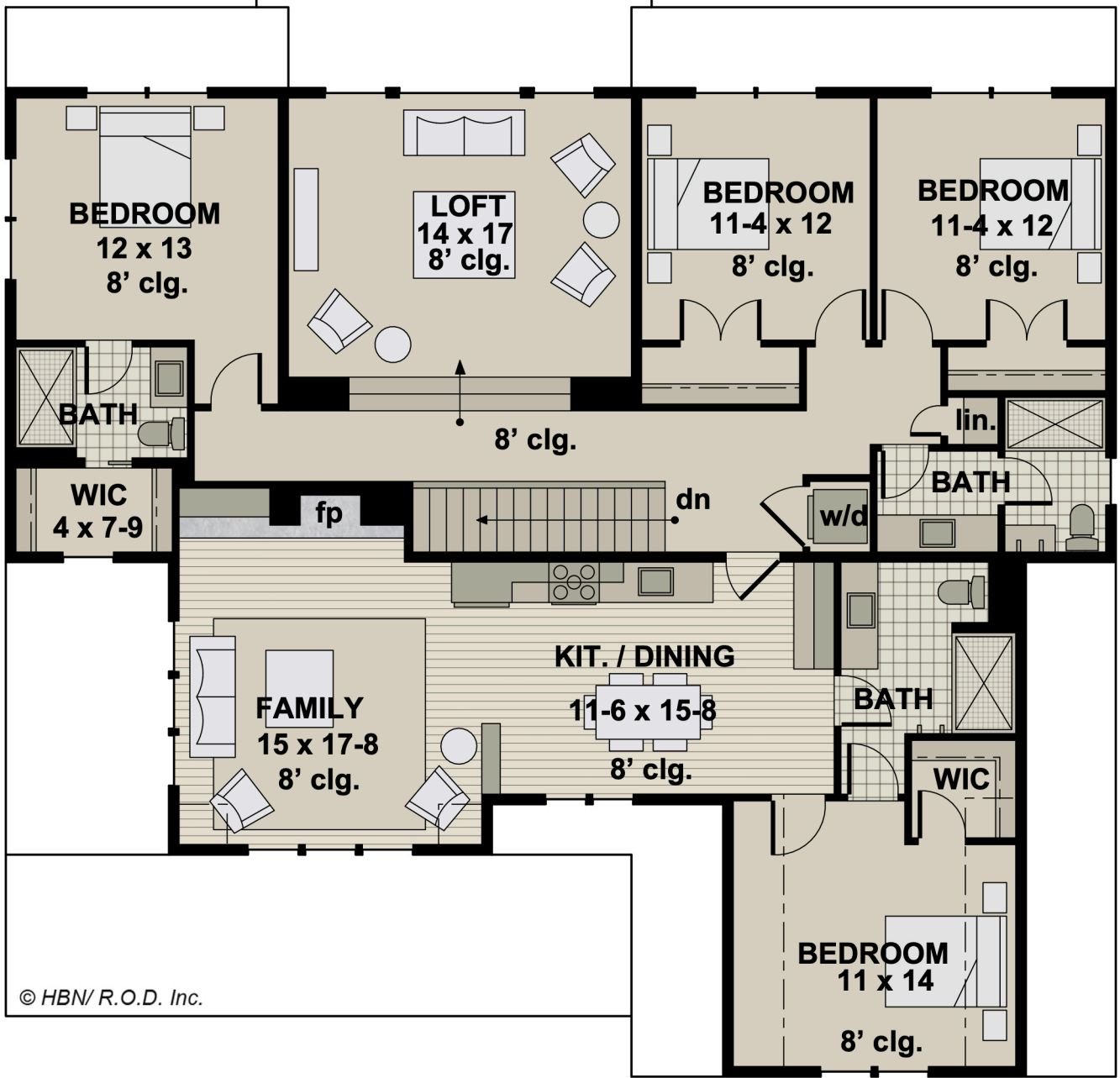


53'-0"

55'-0"

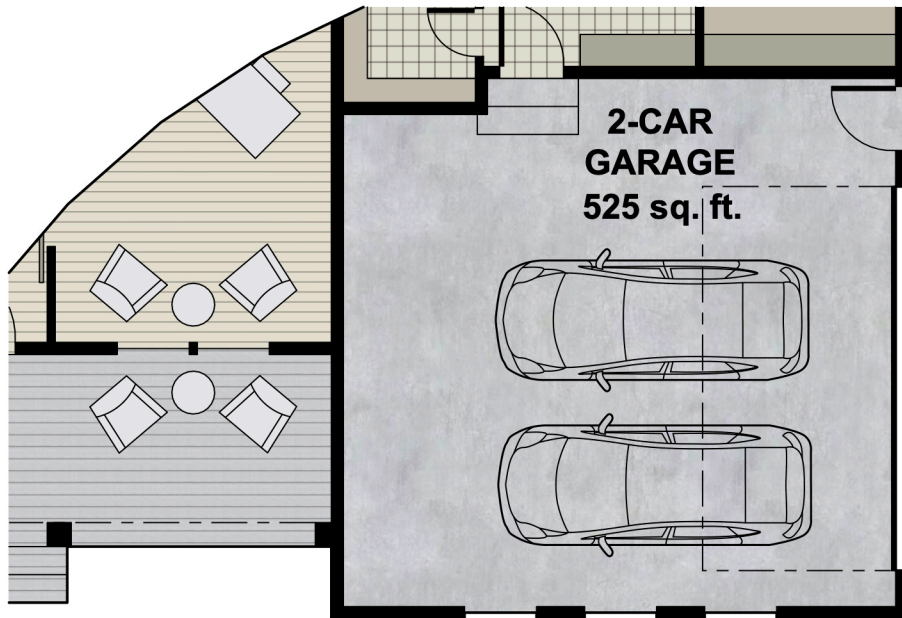
# SECOND FLOOR

2,044 sq. ft.





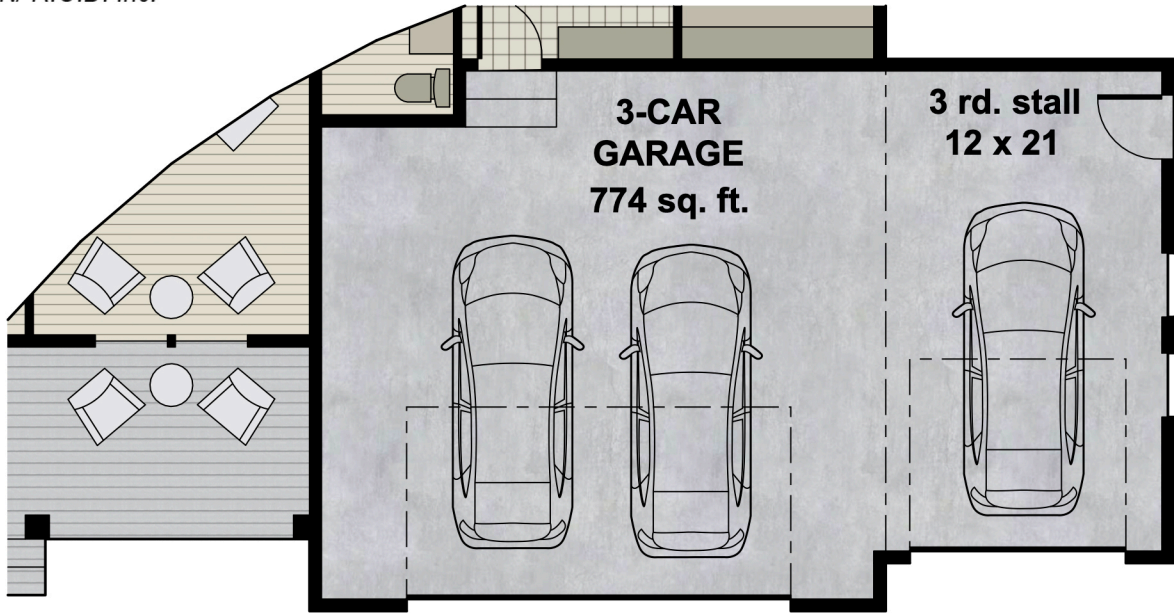
© HBN/ R.O.D. Inc.



**2-CAR SIDE LOAD**



© HBN/ R.O.D. Inc.



**3-CAR FRONT LOAD**  
TOTAL HOUSE WIDTH BECOMES 67'-0"